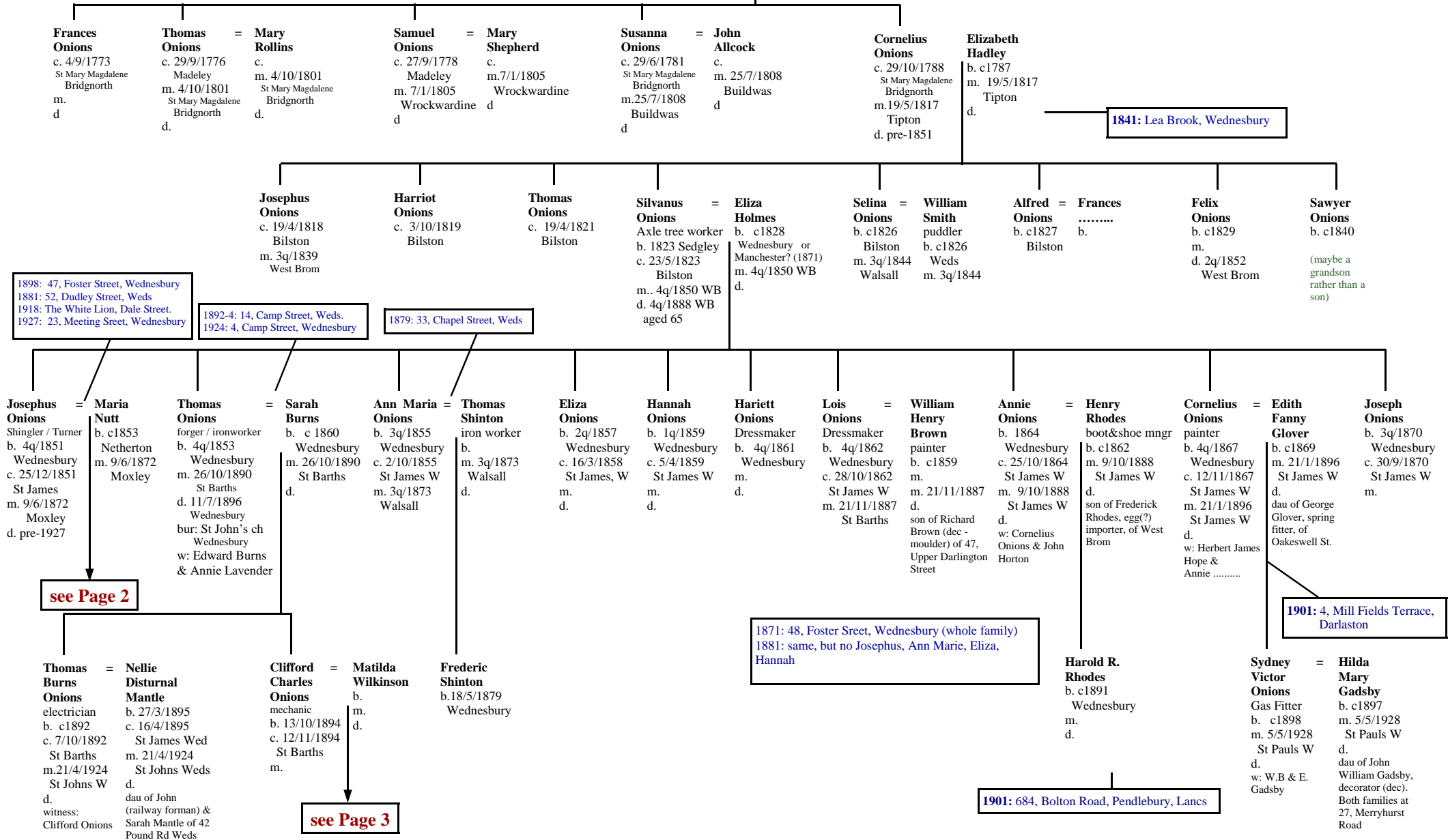


c.
m. 23/8/1772 Madeley
d.
There are lots of Thomas Onions
being Christened in Salop in the mid
1700s !



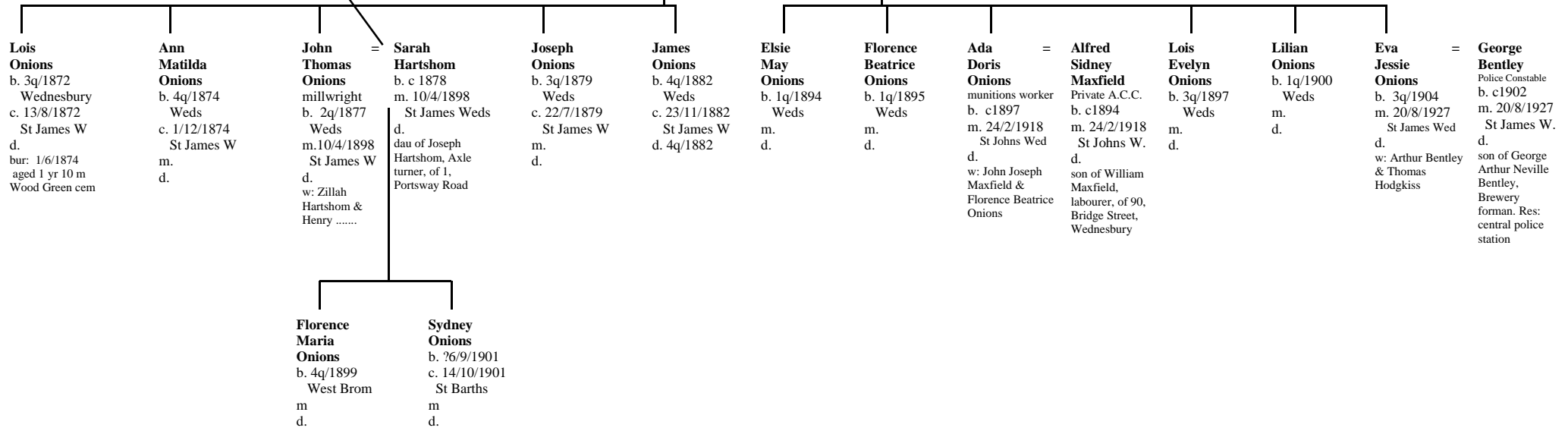
From Page 1

 ↓

1874: Foster Street, Wednesbury
 1881: 52, Dudley Street, Wednesbury
 1898: 47, Foster Street, Wednesbury
 1901: 7, Park Street, Wednesbury
 1918: The White Lion, Dale Street.
 1927: 23, Meeting Sreet, Wednesbury

1901 census: 1 court, 2 house,
 St James Street, Wednesbury
 1901: 29, Wellecroft Street, Weds

Maria Nutt (1) = Josephus Onions = (2) Mary Ann I. Ilsley
 b. c1853 Netherton Shingler / Turner b. c1870 Tipton
 m. 9/6/1872 Moxley b. 1851 Wednesbury m. 4q/1892 West Brom Reg
 d. 3q/1890 West Brom aged 38 c. 25/12/1851 St James, Weds m. 9/6/1872 Moxley d.
 m. 4q/1892 West Brom Reg d. pre-1927



From Page 1

Clifford Charles Onions = Matilda Wilkinson

mechanic
b. 13/10/1894
c. 12/11/1894 St Barths
m.
d.

b.
m.
d.

1927-34: 14, Camp St

Clifford William Onions
b. 25/11/1921
c. 21/12/1921
St Barths, Weds
d. 8/11/1941
in action

Allan Onions = Lily French Armbrister
Staffs county surveyor
b. 1927
c. 13/2/1927
St John's, Weds
m. 1950

b.
m. 1950

Graham Onions = Pamela Jean Whaile
b. 1934
c. 7/10/1934
St John's, Weds
m.

b. 1930
m.

Philip Haydn Onions = Victoria Brakespeare
b. 1951
m.

b. 1951
m.

Stephen Andrew Onions = Christine Sumner
b. 1959
m.

b. 1959
m.

Angela Carol Onions = Les Cotterill
b. 1963
m.

b. 1963
m.

(Les sent me all this recent info)

Robert Matthew Cotterill
b. 1985
m.

James Andrew Cotterill
b. 1987
m.